

DISASTER MANAGEMENT PLAN

1. TABLE OF CONTENTS

Contents	Page
Foreword	2
Purpose	2
Statement of commitment by municipal manager	2
Background	3
Constitutional, Legislative and Policy Mandates	4
Institutional Arrangements	5
Hazards/Vulnerabilities Assessments	5
Risk Reduction Measures	8
Response & Recovery Measures	9
Monitoring and evaluation of the plan	9
Annexure A	10
Annexure B	11

Kannaland Municipality
P.O. Box 30 Posbus
LUTJESMITH
655
Tel: 028 - 551 1023

2. FOREWORD

The Kannaland Disaster plan required for the Disaster Management Act (Act 57 of 2002) requires Local Authorities (B Municipalities) to develop and maintain a Disaster Management Plan for their area of control/jurisdiction. Due to lack of capacity and funding in the municipality this is the initial attempt to draw up a Disaster Management plan. Contingency plans to address the priority risk will be put in place 2012/13 financial year.

3. PURPOSE OF THE PLAN

The purpose of the disaster plan is not only a legislative requirement, but enhances community safety through, planning, mitigation, response and recovery. It is essential that the plan be upgraded to a level 3 plan to **detail** specific risks and hazards with highlight to frequency and severity of potential disasters. The limitations in capacity is of a high nature and roles with specific primary and **secondary** roles/functions is set out to guide the sections within the municipality to work collectively for all to participate and plan for before / during and after disasters within the area.

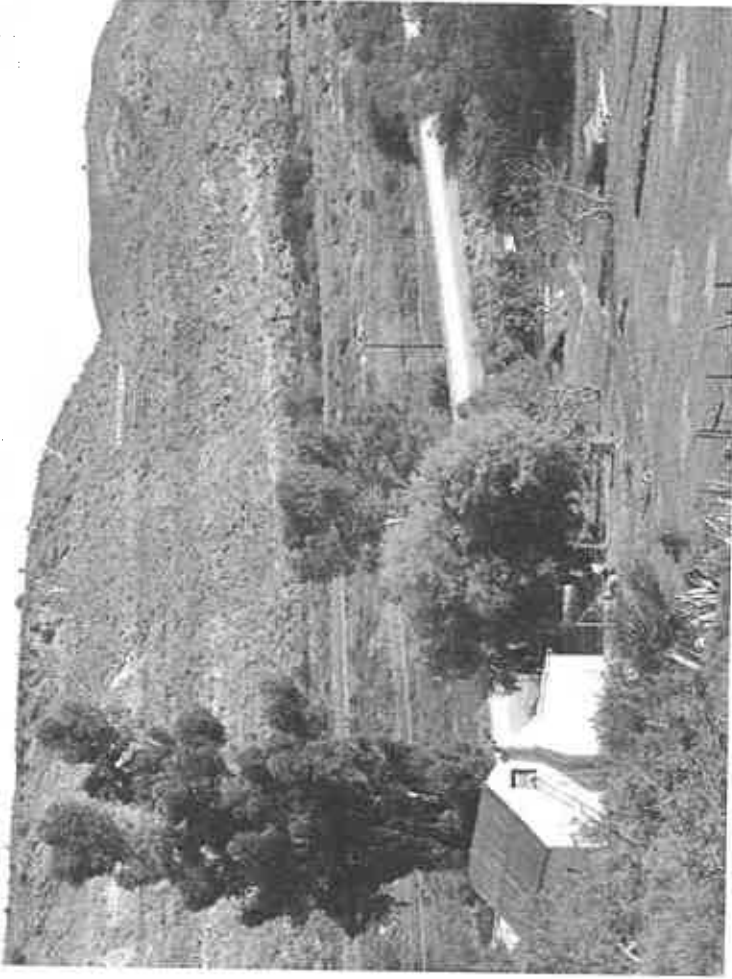
4. STATEMENT OF COMMITMENT BY HOD

Mr. Hendrik Barnard Director Corporate Services, together with Mr. Morne Hoogbaard are committed to see this area improved and that funding into the field of disaster management is essential to planning not only for incidents and putting plans in place to mitigate or control the impact or effect as tolerable or not as essential, but also that awareness and public education at all levels is critical for communities as well as municipal officials in all sections.



5. BACKGROUND

Kannaland Municipality is named after a plant called 'kanna' in Khoi. Indigenous to our area, this is a lush, low-growing succulent that is commonly known as *Kanna*, *Canna*, or *Kougoed* (which means chewable or something to chew). Kanna has been used by the Hottentot people throughout history to improve frame of mind.



The Kannaland Local Municipality is classified as a Category B municipality (i.e. small towns and relatively small populations) and is responsible for basic service provision to the towns of Calitzdorp, Ladismith, Van Wyksdorp, and Zoar, as well as the surrounding farming communities.

Kannaland's extent is approximately **4 758 km²** (over a distance of 135 km east - west and 45 km north - south), and is situated about 340 kilometers North-East of Cape Town, along the famous tourism Route 62. Kannaland is linked by tarred main roads to all other major centres such as Oudtshoorn (100 km), Montagu (139 km), George (160 km), Mossel Bay (185 km) and Port Elizabeth (420 km). Both the administrative and legislative seats of Kannaland municipality are located in Ladismith, with satellite offices in Calitzdorp, Van Wyksdorp and Zoar.

Municipality Kannaland Munisipaliteit
P.O. Box 30 Posbus
LADISMITH
6655
Tel: 028 - 551 1023

The Kannaland Municipal area lies huddled between two mountain ranges, the Swartberge and Anysberg. An impressive mountain peak called Towerkop (2198 m) looms above Ladismith. Another impressive site is Elandsberg (2128 m). Halfway up Elandsberg you'll find a famous landmark, sometimes referred to as Ladysmith's extra star in the galaxy: Stanley's Light (1500 m).

The municipality has the smallest population in the Eden District, and also has the smallest economy in the region. The four largest sector contributors to GDP are Agriculture (34.0%), General Government services (20.4%), Finance and Business services (11.0%), and the manufacturing sector (10.3%).

The climate in Kannaland is known for its hot and dry summer days. The average annual rainfall is about 270 mm, with rainfall occurring throughout the year. The average midday temperatures range from 16.6°C in July to 29.6°C in January, and the mercury does drop to 3.2°C during winter nights.

Kannaland's climate is ideal for the production of **apricots, peaches, plums, nectarines, and grapes**. Approximately 30% of the total apricot export market comes from the district. The well-known Parmalat- and Ladismith dairy products come from the area. Several wine cellars produce top quality wines, port and brandy. In this respect, the quaint little haven of Calitzdorp is known as the port-wine capitol of South Africa by virtue of the top quality wines produced mainly by Boplaas, De Krans, Axehill and Calitzdorp wine cellar. Calitzdorp port

The hospitality trade is flourishing. Tourist accommodation caters for every taste, from 5-star guest houses and Bed-and-Breakfasts to rustic camping. Approximately 180 species of birds have been spotted. Vegetation is widely varied and ranges from fynbos in the mountain to Karoo broken veld, spekboom and succulent Karoo on the koppies and plains. Another endemic shrub to the Klein Karoo is the beautiful "Klapperbos".

Flood, fire and drought have been the most critical factors. Four RDP houses were flooded in Bell Street, Nissenville (Ladismith), with minimal damage. Three labourers' cottages burnt down (1 in Van Wyksdorp; 1 in Gamka-Oos; 1 in Ladismith). Happily, in all these incidences no lives were lost.

During 2009/2010 serious water shortages were experienced due to drought conditions especially in the Zoar district. In January 2010 emergency water was supplied to residents in Zoar, Opsoek and Dankoord.



6. CONSTITUTIONAL, LEGISLATIVE AND POLICY MANDATES

The constitution provides for objectives of local government:

Section 152 (1) d: to promote a safe and healthy environment

Disaster Management Act 57 of 2002:

Municipal Disaster Management : Chapter 5 section 42-55 .

Municipality Kannaland
P.O. Box 30 Postburg
6655
LADISMITH
Tel: 028 - 551 1023

7. INSTITUTIONAL ARRANGEMENTS

As defined in the prescriptions of the Act, the Municipal Manager is the Head of Disaster Management with the delegation of assistance through to the Director of Corporate Services.

The procedures in general for disasters or major incidents are to activate a Joint Operation Centre, which is currently run from the municipal offices?

The municipality is in the process of finalizing the mutual agreement with Eden District Municipality regarding the Fire Services.

Kannaland Municipal Disaster Management Advisory Forum was established on 22 February 2012.

8. HAZARDS / VULNERABILITIES ASSESSMENTS

The Eden District Municipality had undertaken a risk and vulnerability assessment during 2006 and the following have been identified:

a) Biological: Human Epidemics

HIV/AIDS and TB is expected to be high among farm workers in the LM. However, there is, as is the case in most of the EDM, insufficient data available to confirm this.

b) Biological: Agricultural Epidemics

Agricultural epidemics is a major concern on chicken and ostrich farms where avian flu may once again break out and where major losses have already occurred due to the disease.

Municipality Kannaland Munisipaliteit
P.O. Box 30 Posbus
LADISMITH
6055

Tel: 028 - 551 1023

Figure: 4.2.5 A typical rural view in the Kannaland LM



c) Human: Events and Civil unrest

The risk of event-related disasters and civil unrest is very low, due to the rural nature and general low population density, of the communities in the LM.

d) Environmental: Degradation

Environmental land and water pollution related to hazardous substance spillages poses a risk along the major transport routes in the LM.

Environmental degradation may occur as a result of the over-use of fertilisers, as is the case in much of the EDM.

Underground water also abstraction poses unknown risks with regards to its effect on the water table and the associated vegetative cover.

Municipality Kannaland Municipality
P.O. Box 30 Postbus
LUDSMITH

0655

Tel: 028 - 551 1023

Drought conditions pose a risk and this degrades the natural environment and its ability to sustain farming practices. It also increases the possibility of a loss of biodiversity.

e) Environmental: Fires

Plantation fires are a concern in this LM, especially since the ability of the LM to deal with large-scale disasters of this nature is perceived to be inadequate.

f) Geological: Earthquakes and landslides/rock falls

There does not seem to be notable threats in this LM in this regard.

g) Hydro-meteorological: Floods

There does not seem to be notable threats in this LM in this regard.

h) Technological: Transport

As mentioned regarding environmental degradation, transport-related disasters could cause damage to the environment.

i) Technological: Major disruption of key services

The impact of a major disruption in key services in the LM is relatively low, due to the predominantly rural nature of the LM residences, where many of the settlements already have access to alternative services or they can without too much difficulty operate on limited service provision. Water supply may, however, be problematic should long-term drought conditions prevail.



1) Technological: Industrial, explosions and fires

Filling station fires/explosions, LPG gas supply establishment fires/explosions, fires in high-rise buildings, and large structure fires all pose risks in this area. The possible impacts are exacerbated by the perceived lack of capacity in the LM to manage and respond to such events.

The impact prioritisation for the most important risks (in order of priority) is as follows:

- Floods
- Plantation and vegetation fires
- Agricultural epidemics
- Hazardous materials transport
- Drought

9. RISK REDUCTION MEASURES

No other risk reduction measures are in place other than proactive measures during early warnings and forecasts or progression of incidents. Preventive measure are relocating or evacuating members of communities and providing support at a local level or as assisted through the District.



- **Mitigation measures**
- Water restrictions in place
- Boreholes
- Storm water drainage systems

Preparedness measures

- Disaster Management Advisory Forum has been established.
- Meetings/ forums / workshops (newly established Disaster Management Forum)
- SLA/MOU with Eden District municipality for Fire Services in process.

10.

RESPONSE & RECOVERY MEASURES

Kannaland's Disaster Management function leans heavily on the assistance from the Eden District Municipality, which is coordinating disaster management through the Eden District Disaster Management Advisory Forum, however Kannaland has recently established their own Advisory Forum in February 2012.

The municipality has number of mass care centres should there be a need to evacuate people after an incident. (list attached).

Currently there are 14 Fire Fighters for Kannaland municipality (7 permanent, 7 on contract).

In a process of negotiating Mutual Aid Agreement with Eden District Municipality for Fire Services.

11.

MONITORING AND EVALUATION OF THE PLAN

The plan will be reviewed and evaluated annually.

12.

ANNEXURES

- Contact Details
- List of Mass Care Centres

ANNEXURE A

Municipal Contact List

Name & Surname	Department	Contact Nr.
Morne Hoogbard	Municipal Manager	0834157306
Hendrik Barnard	Kannaland	0832718207
Nigel Delo	Chief Financial Officer	0834157281
Peter van den Hoover	Technical Services	0761824700
Randall van der Berg	Traffic- KM	0832631729
Vernon Rank	Electricity - KM	0713956647
Stanley van Rooi	EMS	0734492996
Mr Solomons CC	EMS - Manager	0825714143
Willem Baartman	Housing - KM	0833935509
Leslie Baartman	Building Control- KM	0833016667
T G Davids	DSD	0285512789
J Muller	DKD	0285511040
Cheslin Malgas	Eskom	0285511630
Regenald Timmie	Community Services - KM	0839909619/0285511023
David Opperman	Ladismith E-centre	0848967165
Captain Edwards	SAPS - Ladismith	028 5518100
	SAPS - Calitzdorp	044 2138800
Leon Blignault	Kannaland	0833800106
R Haridien	PDMC	0843815599
P van der Heever	Kannaland	0761824700
C Claassen	Kannaland	0837077504
Gerhard Otto	Eden DM	0836302602
J Greyling	EDENDM	0794926092
Willem Nel	Agriculture	0827674170/028 5611623

Executive Officer, Kannaland Municipality

P.O. Box 30 Peshus

LADISMITH

6655

Tel: 028 - 551 1023

ANNEXURE B

MASS CARE CENTRES

LIGGING	ADRES / KOÖRDINATE	KONTAK- BESONDERHEDE	FASILITEITE		TOILETTE	WASBAKKE	STORTE	KOMBUISE	UITGANGE
CALITZDORP			AANTAL						
Stadsaal	Millerstraat	Mnr. Hoogbaard – 028 551 1023 / Hendrik Barnard 083 271 8207	+200 mense	2	4	Geen	Ja	3	
Gemeenskapsaal	1ste Laan, Bergsig	Mnr. Hoogbaard – 028 551 1023 / Hendrik Barnard 083 271 8207	+200 mense	2	2	Geen	Ja	3	
Skoolsaal – C/dorp Sekondere skool	Andries Pretorius straat	Mnr Swatz – 044 213 3313 044 213 3627	+200 mense	20	10	Geen	Ja	8	
NG Kerk									
Excelsior Primere Skool	Voortrekkerweg	Mnr Sam Duiker – 082 413 7086	+400 mense	16	7	Geen	Ja	4	
VGK Kerk	Pietersen straat	Dominee November – 044 213 3404	+100 mense	2	4	Geen	Ja	4	
UCC Kerk	09de laan, Bergsig	Mev. Abrahams – 071 480 2116	+100 mense	4	1	Geen	Ja	4	
LADISMITH									
Stadsaal	Hoek van Van Riebeeck en Koninginstraat 34	Mnr. Hoogbaard – 028 551 1023 / Hendrik Barnard 083 271 8207	+200 mense	4	5	Geen	Ja	5	
Gemeenskapsaal	Hoek van Le Roux en Raubenheimerstraat	Mnr. Hoogbaard – 028 551 1023 / Hendrik Barnard	+200 mense	10	3	2	Ja	5	

City of KwaZulu-Natal
Box 30 Postbus
LADISMITH
6655

Tel: 028 - 551 1023

			083 271 8207							
Skoolsaal - L/smith Sekonder	Vrede Laan	Mnr SA Walters - 028 551 1065	+50 mense	4	1	Geen	Ja	4		
Koshuis	Koninginstraat	Mev Oosthuisen - 028 551 1225	+50 mense	7	8	2	Ja	4		
NG Kerkmaal	Koninginstraat 31	Mev Lesbe Rossouw - 028 551 1271/964	+150 mense	4	2	Geen	Ja	4		
Die Lutherhuis Kerkmaal	Raubenheimerstraat 11	Mnr N Plaaijies - 028 551 1437	+100 mense	4	4	Geen	Ja	2		
Die VGK Kerkmaal	Raubenheimerstraat	Mnr J Frans - 078 260 5927	+100 mense	5	1	Geen	Ja	2		
L/smith Sekonder	Middletonstraat	Mnr H Deal - 028 551 1655	+200 mense	10	5	4	Geen	5		
L/smith Koshuis	Middletonstraat	Mnr H Deal - 028 551 1655	+100 mense	16	40	16	Ja	4		
Landbou Skousaal	R62 roete	Mnr Martin Gelderblom - 083 461 4858	+300 mense	4	2	Geen	Ja	3		
VAN WYKSDORP										
NG Kerkmaal	Van Wyksdorp	Mnr. Hoogbaard - 028 551 1023 / Hendrik Barnard 083 271 8207	+100 mense	4	2	Geen	Ja	5		
Die Luther Kerkmaal	Van Wyksdorp	Mnr. Hoogbaard - 028 551 1023 / Hendrik Barnard 083 271 8207	+100 mense	6	Geen	Geen	Geen	2		
OASIS Gemeenskapsaal met Siekeboeg	Van Wyksdorp	Mnr Jonathan Jantjies - 079 224 1297	+100 mense	4	4	Baddens	Ja	5		
ZOAR										
Maxi's	Langstraat	Mnr. Hoogbaard -	+100	5	5	1	Ja	4		

LADISMIT

6655

Tel: 028 - 551 1023

		028 551 1023 / Hendrik Barnard 083 271 8207	mense						
Die Klubhuis saal	Sportgronde	Mnr. Hoogbaard – 028 551 1023 / Hendrik Barnard 083 271 8207	+50 mense	5	5	3	Ja		3



